



mixergy[®]

INTELLIGENT HOT WATER FOR SMARTER BUILDINGS

Our patented technology reduces costs, lowers carbon, and helps businesses hit their sustainability goals

AWARD WINNING TECHNOLOGY

Smarter hot water is here, connected, intelligent, and built for efficiency.

Mixergy transforms hot water storage into an intelligent, connected energy asset. From tourist sites to high-rise offices, our patented technology reduces costs, lowers carbon, and helps businesses hit their sustainability goals, without compromising comfort.

Scalable smart hot water systems

From 300-2,000L - connects seamlessly with existing boilers, heat pumps, VRF, and solar PV.

Patented top-down heating

Heat only the water you need, cutting waste and boosting efficiency.

Precision-level sensing

Know exactly how much hot water is available. No guessing. No oversizing.

Usable hot water within 35 minutes

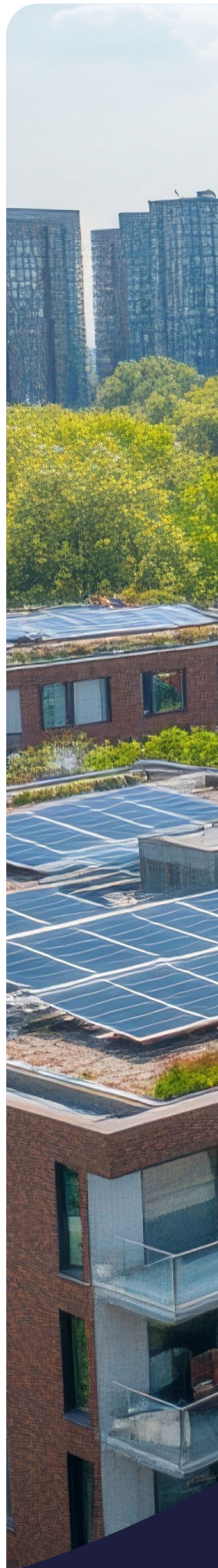
Up to 10x quicker reheat times, from direct immersion heater or external plate heat exchanger.

Best in class Demand Side Response (DSR) capability

Generate recurring revenue at larger sites by capturing DSR value while still delivering the hot water performance you need.



*Proud winners of the 2025 Kings
Award for Enterprise in Innovation*





**We transform hot water storage into an
intelligent, connected energy asset**

DESIGNED AROUND REAL BUILDING DEMAND

Mixergy is built to save in any commercial setting.

From offices and schools to hotels, leisure centres and healthcare sites, hot water demand is rarely constant. Mixergy helps commercial buildings respond intelligently, storing and heating water in line with actual usage.

With live visibility of available hot water, temperature and system performance, facilities teams can reduce energy waste, maintain comfort and stay in control.



Lower running costs

Heat only what you need, when you need it.



Reliable under changing demand

Keep hot water available across varied usage and peak periods.



Works with multiple heat sources

Integrates with electric, solar PV, VRF and heat pumps.



Engineered to save energy in high demand environments where hot water must be safe, reliable and ready when needed



Office blocks

Lower energy use across unpredictable daily occupancy



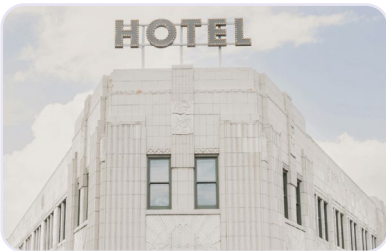
Historic buildings

Decarbonise hot water without compromising protected fabric



Stadia

Meet peak demand without wasting energy between events



Hotels

Guest comfort protected, energy use intelligently reduced



Leisure

High demand hot water, controlled efficiently each day



Schools

Safe, reliable hot water with lower running costs



Healthcare

Reliable temperature control for safe, efficient operation

EXCHANGE SQUARE, LONDON

A performance-led approach to electrifying commercial hot water.

In the heart of one of London's most ambitious commercial developments, a forward-thinking collaboration between Twenty One Engineering and Mixergy has delivered a pioneering hot water next generation system, focusing on a heat recovery solution at Exchange Square.

The result? A fully electrified hot water system powered by recovered energy from building cooling operations, proving it's not only possible to eliminate gas, but to do so efficiently and cost-effectively.

The system cut total energy use by approximately 600 kWh per week, delivered a Coefficient of Performance (COP) of >6.0, and delivered a payback in under a year, evidence that performance-led electrification is commercially viable today.

This is a blueprint for how modern commercial estates can decouple commercial hot water from traditional building heating systems, delivering measurable carbon and energy savings.



The traditional designs were too big, and the operational data gave us the right size for the system. Mixergy's smart storage enabled that flexibility we needed to size it right.

Phil Draper, 21 Engineering

SMART HEAT RECOVERY

Twenty One Engineering designed a system that recovers waste heat from the building's lift motor room via the VRF system.

This recovered heat supplies a sanitary water heater, delivering 70°C water to two 300L Mixergy smart hot water cylinders. Using volume control, the cylinders intelligently store and release heat when available, rather than relying on demand-led operation.



A strategic shift away from gas

SAVES ENERGY

Cut ~600 kWh per week on the total energy use

QUICK PAYBACK

Payback in under 1 year

HIGHLY EFFICIENT

Achieved a COP of >6.0



HAMPTON COURT PALACE

For heritage sites, achieving deep decarbonisation is notoriously difficult because of the challenge of balancing new technologies and approaches with building conservation requirements.

Hampton Court Palace, with over half a million visitors each year, has a high and varied hot water demand, from public washrooms serving thousands daily to large-scale catering facilities. Conventional systems keep vast amounts of water hot around the clock, wasting energy and increasing carbon output.

Mixergy's technology takes a radically different approach, heating only the water that is needed, when it is needed. The partnership is part of a wider sustainability strategy across Historic Royal Palaces, the independent charity that cares for Hampton Court Palace. The strategy seeks to reduce energy consumption, remove fossil fuels from the six sites in their care, and protect and enhance biodiversity and the landscape surrounding the palaces.

At the same time, the partnership gives Mixergy a high-profile platform to demonstrate impact in one of the UK's most recognisable historic settings. The trial's findings could influence decarbonisation strategies for other heritage organisations.



This trial with Mixergy demonstrates our commitment to pioneering solutions that other heritage organisations can adopt. If we can achieve significant carbon reductions at a site as complex as Hampton Court Palace, we can prove it's possible for historic buildings across the UK.

Jen Stone, Head of Sustainability at Historic Royal Palaces

Decarbonised hot water,
no disruption to the historic
fabric.



SPECIFICATION

**Available from
300L to 2000L**

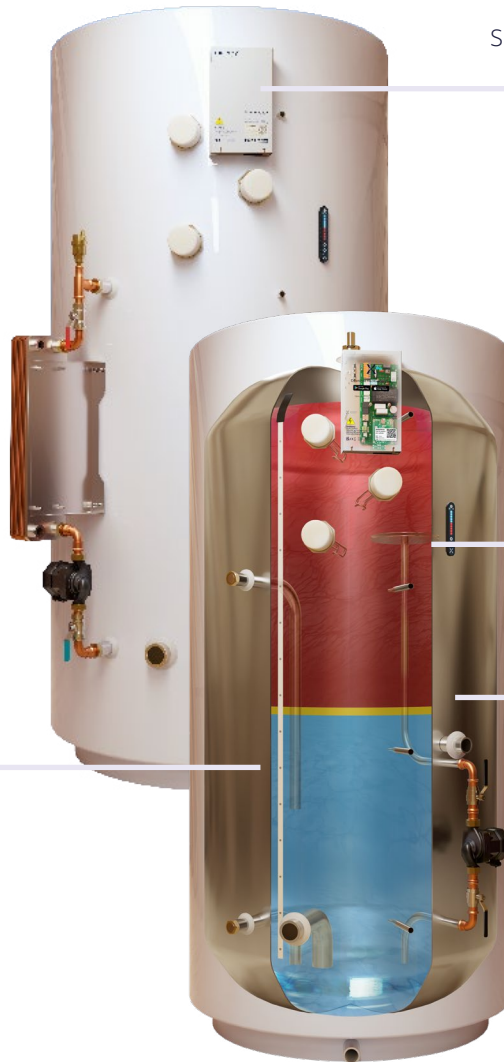
**BMS
compatible via
Modbus TCP**

**Up to 54kW
immersion heater
power**

**25 year warranty
*Subject to T&Cs***

Optional - Plate Heat Exchanger
Connect to heat pumps (air-source, ground-source) or enable heat recovery via VRF systems.

Patented Sensor Strip
Precision level sensing of the hot water volume and temperature



Intelligent
Smart controls that optimise heating around cost, demand and carbon.

Up to 54kW Power
Immersion heater options range from 3kW up to 18kW, depending on cylinder size

Top Down Heating
Heat what's needed, when its needed.

AUTO-CLEANSING

Automated pasteurisation cycles heat the full cylinder, with real time data to verify performance.

FUTURE READY

A flexible pathway to net zero, compatible with all heat sources, including waste heat recovery.

GRID READY

Supports grid flexibility by storing energy intelligently, utilising tariff and weather led data.

Product Variant	MX-300-COM-750	MX-400-COM-750	MX-500-COM-750	MX-800-COM-990	MX-1125-COM-990	MX-2000-COM-1290
Nominal capacity	300 l	400 l	500 l	800 l	1125 l	2000 l
Height	1380 mm	1430 mm	1720 mm	1604 mm	2100 mm	2117 mm
Diameter	750 mm	750 mm	750 mm	990 mm	990 mm	1290 mm
Immersion options	1 No. 3 / 6 / 9 kW	2 No. 3 / 6 / 9 / 12 kW	3 No. 6 / 9 / 12 kW	3 No. 6 / 9 / 12 kW	3 No. 9 / 12 / 15 kW	3 No. 9 / 12 / 15 / 18 kW
Max. pressure	6 bar					
CWS connection	1" BSP			1 ½" BSP		2" BSP
DHW connection	1" BSP			1 ½" BSP		2" BSP
Secondary return connection	1" BSP					
Unladen weight	55 kg	85 kg	95 kg	155 kg	190 kg	295 kg
Packaged weight	65 kg	95 kg	105 kg	105 kg	200 kg	315 kg
Approx. full weight*	355 kg	485 kg	595 kg	955 kg	1315 kg	2295 kg
ErP rating	B			C		
Heat loss @ 65°C	1.77 kW/hr/24hr	2.35 kW/hr/24hr	2.74 kW/hr/24hr	3.29 kW/hr/24hr	3.6 kW/hr/24hr	4.2 kW/hr/24hr
Cylinder material	Duplex Stainless Steel					
Reheat Times						
Reheat 25%	3kW = 114 mins 6kW = 54 mins 9kW = 36 mins	6kW = 72 mins 12kW = 36 mins 18kW = 24 mins 24kW = 18 mins	12kW = 45 mins 18kW = 30 mins 36kW = 15 mins	18kW = 48 mins 27kW = 31 mins 36kW = 24 mins	27kW = 45 mins 36kW = 33 mins 45kW = 26 mins	27kW = 79 mins 36kW = 57 mins 45kW = 47 mins 54kW = 40 mins
Reheat 50%	3kW = 210 mins 6kW = 102 mins 9kW = 66 mins	6kW = 132 mins 12kW = 66 mins 18kW = 44 mins 24kW = 33 mins	12kW = 84 mins 18kW = 55 mins 36kW = 28 mins	18kW = 90 mins 27kW = 59 mins 36kW = 44 mins	27kW = 83 mins 36kW = 63 mins 54kW = 49 mins	27kW = 147 mins 36kW = 111 mins 45kW = 87 mins 54kW = 73 mins
Reheat 75%	3kW = 294 mins 6kW = 144 mins 9kW = 96 mins	6kW = 192 mins 12kW = 96 mins 18kW = 63 mins 24kW = 48 mins	12kW = 120 mins 18kW = 78 mins 36kW = 40 mins	18kW = 126 mins 27kW = 84 mins 36kW = 63 mins	27kW = 120 mins 36kW = 90 mins 45kW = 72 mins	27kW = 210 mins 36kW = 156 mins 45kW = 120 mins 54kW = 104 mins
Reheat 100%	3kW = 370 mins 6kW = 180 mins 9kW = 120 mins	6kW = 240 mins 12kW = 120 mins 18kW = 78 mins 24kW = 60 mins	12kW = 150 mins 18kW = 99 mins 36kW = 50 mins	18kW = 156 mins 27kW = 105 mins 36kW = 78 mins	27kW = 147 mins 36kW = 108 mins 45kW = 84 mins	27kW = 251 mins 36kW = 196 mins 45kW = 156 mins 54kW = 130 mins

Based on $\Delta T = 50^\circ\text{C}$ (10°C to 60°C)





Speak to our team

commercial@mixergy.co.uk



www.mixergy.co.uk

Mixergy Ltd, 2 Canal View, Wharf Farm,
Eynsham Road, Cassington, Oxfordshire OX29 4DB

Claims are based on real-world data from our customers and trial sites. Individual results may differ. All data was accurate at the time of capture and compared to average energy costs at that period.



CIPHE

 hot water
association